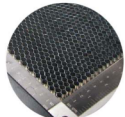


Optional Items

Pass-through
Door Switch ModuleGrid Cutting Table /
Honeycomb Table

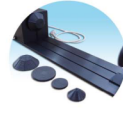
Air Compressor Unit



Fume Extraction System

SmartGUARD™ Fire
Alarm (Patented)

SmartAIR Nozzle



Rotary Attachment

Specification		Mercury III
Work Area		635 x 458 mm (25 x 18 in.)
Max. Part Size (L x W x H)	All doors closed	685 x 482 x 165 mm (27 x 19 x 6.5 in.)
	All doors open	685 x ∞ x 165 mm (27 x ∞ x 6.5 in.)
Table Size		790 x 530 mm (31.1 x 20.9 in.)
Dimensions (W x D x H)		1125 x 720 x 1005 mm (44.3 x 28.3 x 39.6 in.)
Laser Source		12, 30, 40, 60W
Cooling		Air-cooled, Operating environment temperature 15°-30°C (60°- 86°F)
Drive		Closed-loop DC Servo Control
Speed Control		Adjustable from 0.1~100% of 42 IPS (Up to 16 color-linked speed settings per job)
Power Control		Adjustable from 1-100% (Up to 16 color-linked power settings per job)
Engraving Capability		256-level gray scale image processing capability
Distance Accuracy		0.254 mm or 0.1% of move, whichever is greater
Z-Axis Movement		Automatic
Focus Lens		Standard 2.0", optional 1.5", 2.5", & 4.0" available
Resolution (DPI)		Available 125, 250, 300, 380, 500, 600, 760, 1000, 1500
Interface		10 Base-T Ethernet USB Type-A 2.0 – For USB storage (Max. 32GB capacity, FAT file system) USB Type-B 2.0 – For connecting with the computer
Compatible Operating Systems		MS Windows
Display Panel		4-line LCD panel showing current file name, total working time, laser power, engraving speed, file(s) loaded into memory buffer, setup and diagnostic menus
Safety		Class I Laser Product Compliant with EN60825, Class II Laser Product Compliant with CDRH 2006/42/EC Machinery Directive Compliance Class 4 Laser Product Compliant with CDRH with the optional pass-through door module
Auto Focus		✓
Red Dot Pointer		✓
Pass Through Doors		✓
3D and Stamp Mode		✓
Operation Voltage		100-240VAC, 50-60Hz Auto Switching, Max. 15A
Fume Extraction System		External exhaust system with minimum flow rate 640m ³ /h (CFM 377 ft ³ /min) is required, 2.3kPa negative pressure (Pure-Air PA-1000FS @ 4" exhaust port)

* Speed does not equal to throughput. See dealer or visit www.GCCworld.com for more details.

* The flow rate is determined by a default fume extraction system; the flow rate may vary due to a different fume extraction system.

△ Specifications are subject to change without prior notice.

*** Please use certified brands by GCC for LaserPro USB storage, kindly refer to GCC User Manuals for more details.



Abrasive Imaging GmbH
Scharpenberg 40
45468 Mülheim / Germany
Phone: +4917622621439

www.GCCworld.com


Mercury III

- 635 x 458 mm (25 x 18 in.) working area
- Popular all around laser engraver with stable and satisfactory performance
- Intuitive control panel allows easy operations
- Easy maintenance motion system
- Emergency button and key-switch add an extra layer of safety
- Pass-through front and rear doors to accommodate oversized working pieces (optional)
- Feature-rich windows driver